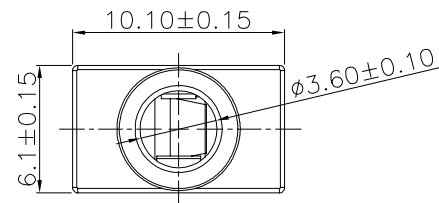
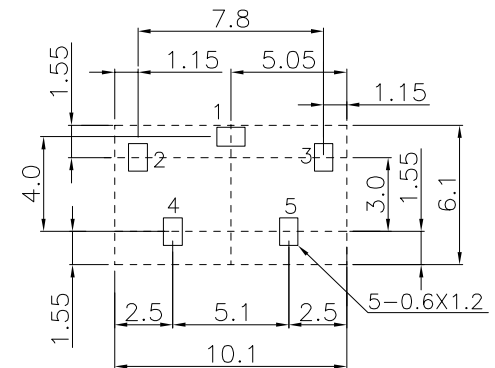
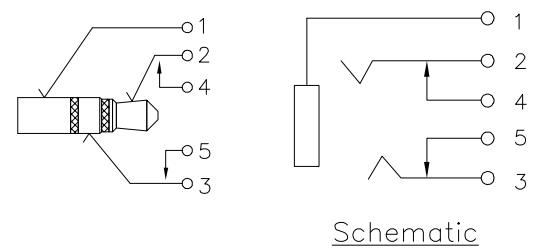
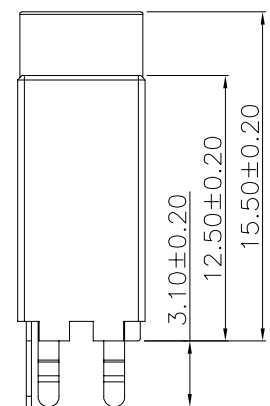
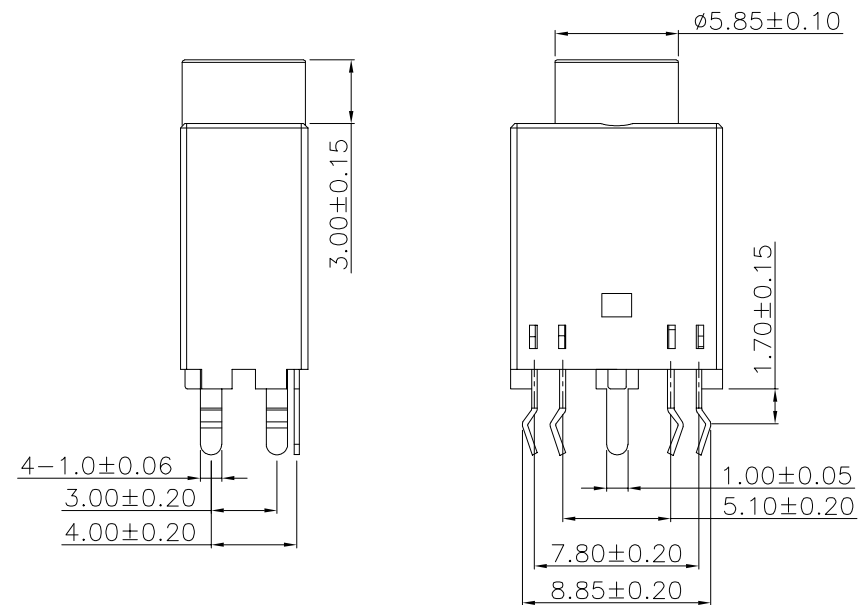


RoHS GP HF

REV.	ECR/N NO.	DESCRIPTION	DRAWN	DATE
A	/	NEW	—	—
B	/	更新图框	DENGJU	2020/11/16



NOTE:  
 Contact Current Rating: 0.5A  
 Insulation Resistance: 100MΩ Min.  
 Contact Resistance: 30 mΩ Max.  
 Dielectric Withstanding Voltage: 500V/AC 1Minute  
 Insertion/Withdrawal Force:5-25N  
 Durability: 5000 Cycles



PCB LAYOUT

6	基座	1	PPA	黑色	
5	5号插脚	1	COPPER ALLOY	0.30	Ag
4	4号插脚	1	COPPER ALLOY	0.30	Ag
3	3号插脚	1	Qsn6.5-0.1	0.25	Ag
2	2号插脚	1	Qsn6.5-0.1	0.25	Ag
1	1号插脚	1	Qsn6.5-0.1	0.25	Ag
序号	零部件名称	数量	材料	规格	电镀

TOLERANCE	MODEL NAME: CKX-3.5-58 5Pin	DRAWN: DENGJU
X.X ±0.35	MODEL NO: WLPN-021B	CHECKED: YAOSHIXUAN
X.XX ±0.25	UNIT: mm	APPROVED: WUHUAMING
X.XXX ±0.10	SCALE: 1:1	DATE: 2020/11/16
ANGLE ±2.0°	REVISION: A	DWG NO:
	SHEET: 1/1	FILE: C

**WILCO** 深圳市兴万联电子有限公司  
 SHENZHEN XING WAN LIAN ELECTRONICS CO., LTD.