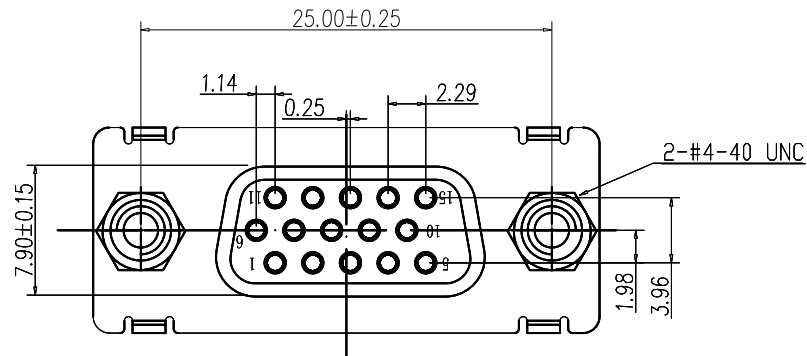


RoHS GP HF

REV.	ECR/N NO.	DESCRIPTION	DRAWN	DATE
A	/	NEW	Lijian	2013/01/22
B	ECN201507001	焊脚高度设为2.5±0.15	DengJu	2015/07/11

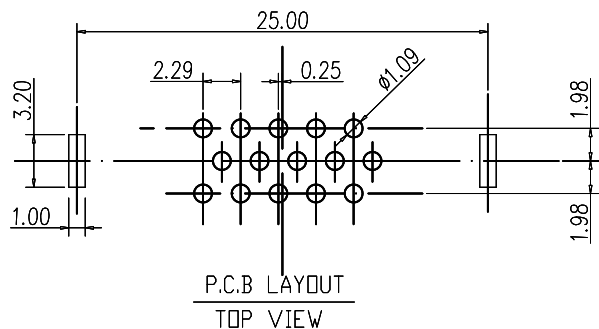
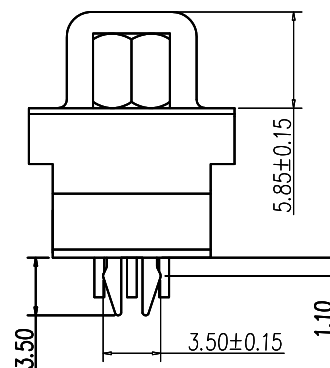
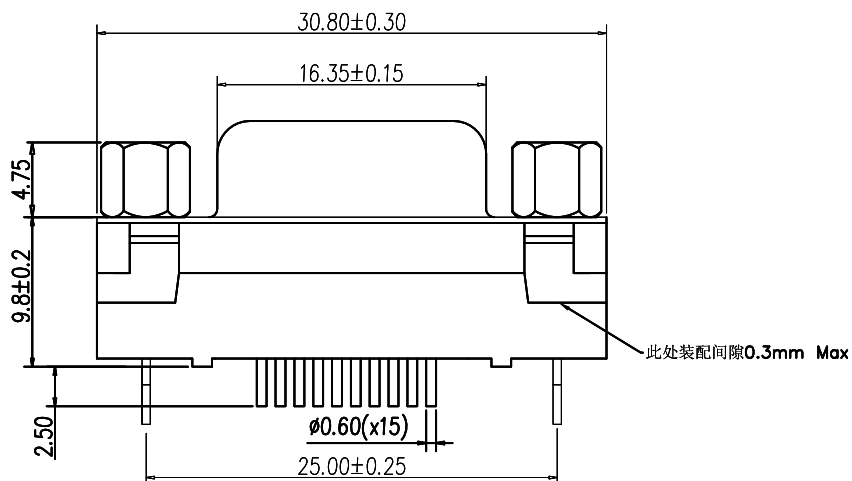


MATERIALS:

Contact : Brass
 Housing: PBT, UL 94V-0 blue
 Shell : Cold Roller Steel
 Board lock: SPCC
 SCREW:free-cutting Steel

FINISHES:

Contact Finish: TIN PLATING OVER ALL.
 NICKEL UNDER PLATING OVER ALL.
 Shell Finish: NICKEL PLATING OVER ALL.
 Board lock Finish: TIN PLATING OVER ALL.
 NICKEL UNDER PLATING OVER ALL.



TOLERANCE	MODEL NAME: HDC 15母180度 9.8MM 蓝胶 铆锁4.75 鱼叉3.5 RoHS环保 防火	DRAWN: DengJu		
X.X ±0.35	MODEL NO: WLHK-036B	CHECKED: YAOSHIXUAN		
X.XX ±0.25	UNIT: mm	SCALE: 1:1	REVISION: B	SHEET 1/1
X.XXX ±0.10	ANGLE ±2.0°	APPROVED: WUHUAMING		
		DATE: 2015/07/11		
	 WALCO 深圳市兴万联电子有限公司 SHENZHEN XING WAN LIAN ELECTRONICS CO., LTD.	DWG NO:		
		FILE: C		