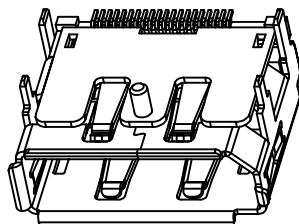
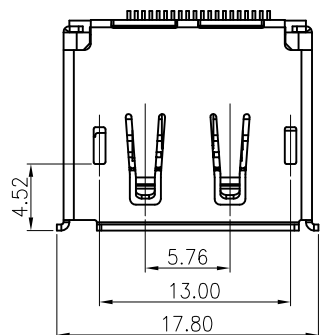


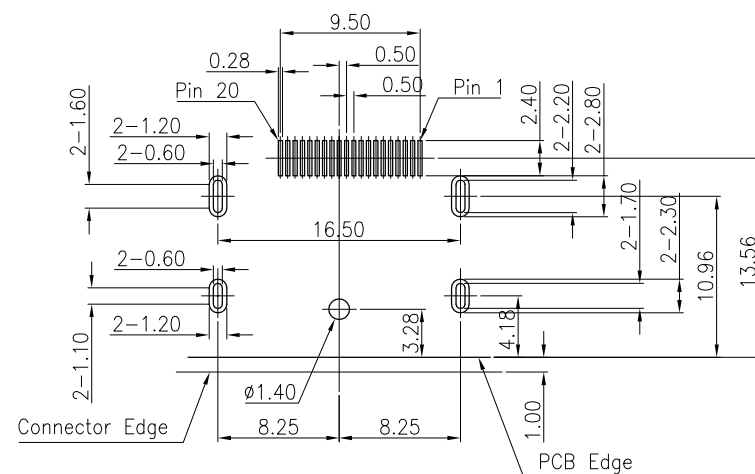
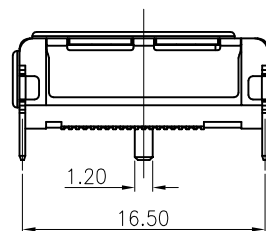
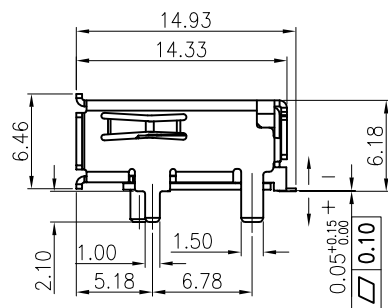
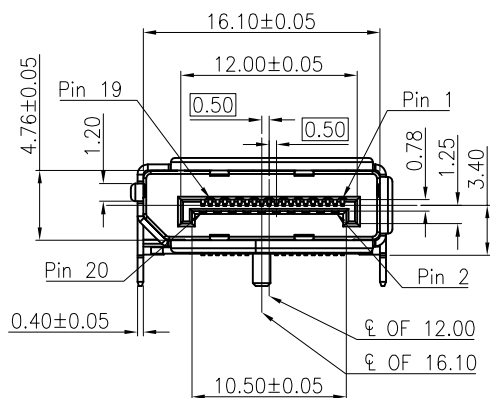
RoHS GP HF

REV.	ECR/N NO.	DESCRIPTION	DRAWN	DATE
A	/	NEW	PYP	2016/10/10
B	/	更新图框及增加尺寸	DENGJU	2021/03/17

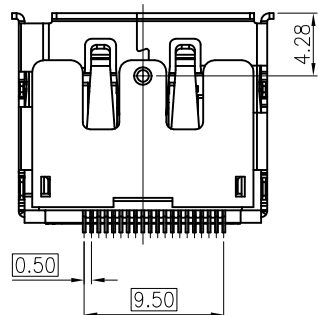


NOTE:

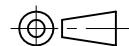
- MATERIAL:
HOUSING: LCP,UL94V-0; COLOR: BLACK
COVER: LCP,UL94V-0; COLOR: BLACK
CONTACT: COPPER ALLOY
SHELL: COPPER ALLOY
- FINISH:
CONTACT: AU PLATED ON CONTACT AREA,
MATT TIN PLATED ON SOLDER TAILS,
NICKEL UNDERPLATING OVER ALL.
SHELL: NICKEL UNDERPLATING OVER ALL.
- SPECIFICATION:
3.1: ELECTRICAL:
CONTACT CURRENT RATING: 0.5A
INSULATION RESISTANCE: 100mΩ Min.
CONTACT RESISTANCE: 30 mΩ Max.
DIELECTRIC WITHSTANDING VOLTAGE: 500V/AC 1MINUTE
3.2 MECHANICAL:
MATING FORCE: 4.5Kgf Max.
UNMATING FORCE: 1.0Kgf~4.0Kgf
DURABILITY: 10000 CYCLES.



RECOMMENDED PCB LAYOUT
(THICKNESS=1.6±0.15mm)



TOLERANCE	MODEL NAME: DP SMT TYPE 有弹 单柱 后脚宽1.5 端子半金雾锡G.F PS载带包装	DRAWN: DENGJU
X.X ±0.20	MODEL NO: WLDP-011B	CHECKED: WUXIAOTAO
X.XX ±0.10	UNIT: mm	APPROVED: WUHUAMING
X.XXX ±0.08	SCALE: 1:1	DATE: 2021/03/17
ANGLE ±1.0°	REVISION: B	DWG NO:
	SHEET: 1/1	FILE: C
	SHENZHEN XING WAN LIAN ELECTRONICS CO., LTD.	



WILCO 深圳市兴万联电子有限公司