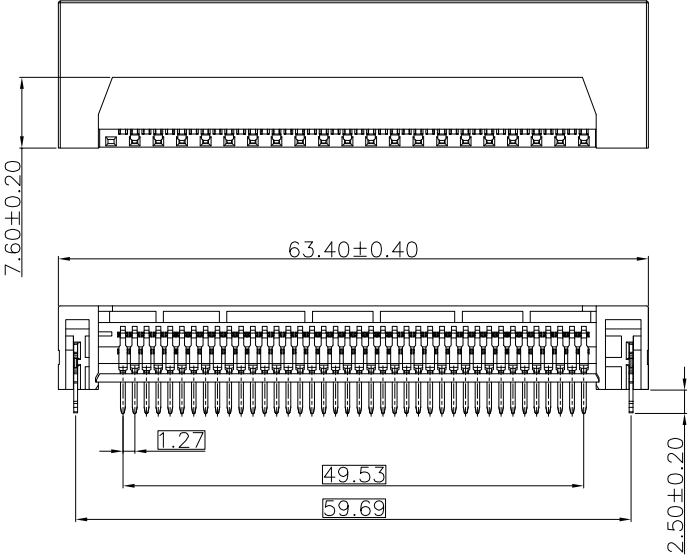
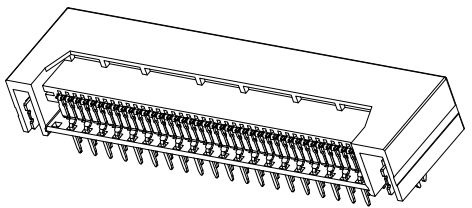


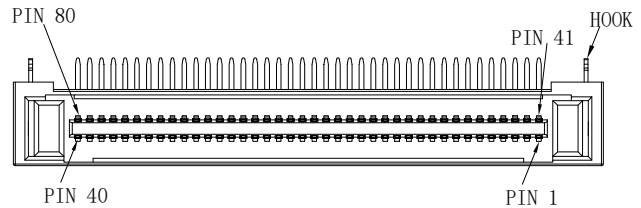
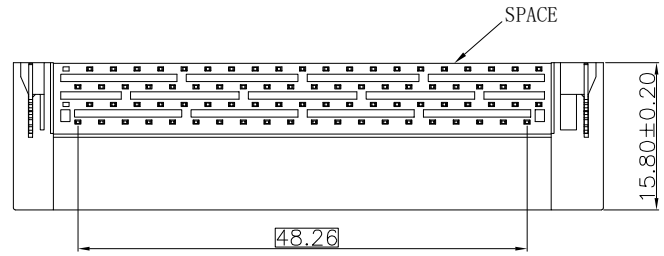
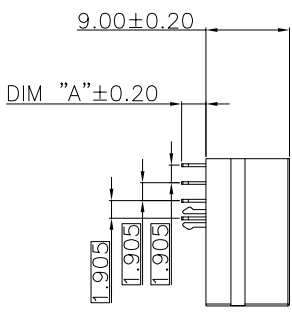
RoHS GP HF

REV.	ECR/N NO.	DESCRIPTION	DRAWN	DATE
A	/	NEW	Li Song	2021/3/26
B	/	UPDATE DRAWING	Li Song	2021/7/10



NOTES:

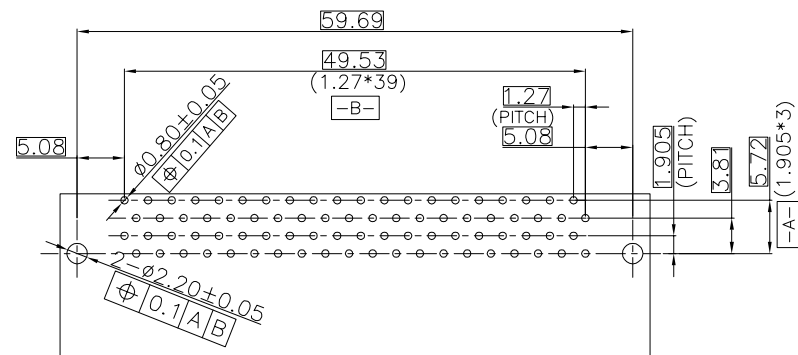
- MATERIAL SPECIFICATION:
 - HOUSING: HIGH TEMP THERMOPLASTIC UL94-V0 V2 OR HB; COLOR: BLACK
 - SPACE: HIGH TEMP THERMOPLASTIC UL94-V0 V2 OR HB; COLOR: BLACK
 - CONTACT: COPPER ALLOY;
 - HOOK: STEEL ALLOY OR STAINLESS STEEL OR COPPER ALLOY;
- PLATING SPECIFICATION:
 - CONTACT:
 - 50U NICKEL UNDERPLATED;
 - GOLD PLATING ON CONTACT AREA;
 - 100U MATTE TIN PLATING ON SOLDER AREA;
 - HOOK
 - ONLY NICKEL PLATING;
 - OR NO PLATING;
 - OR 50U MIN NICKEL UNDERPLATED, 100UMIN MATTE TIN;
- MECHANICAL PERFORMANCE:
 - DURABILITY: 500 CYCLES MIN;
- ENVIRONMENT PERFORMANCE:
 - OPERATING TEMPERATURE: -40°C TO +85°C;
- ELECTRICAL PERFORMANCE:
 - CURRENT RATING: 1.0 AMP PER PIN;
 - LLCR: 40mΩ MAX(INITIAL);
 - INSULATION RESISTANCE: 100MΩ MIN;
 - DIELECTRIC WITHSTAND VOLTAGE: AC 500V FOR 1 MINUTE;
- RoHS COMPLIANT.
- WAVE SOLDERING PROCESS
 - RECOMMENDED CONDITION FOR WAVE SOLDERING: 220±5°C AND IMMERSION DURATION 10±2 SECONDS,



TOLERANCE	MODEL NAME: OPS 80PIN MALE TYPE				DRAWN: Li Song
X.X ±0.35	MODEL NO: SEE TABLE				CHECKED: Youhua Cai
X.XX ±0.25	UNIT:	SCALE:	REVISION:	SHEET	APPROVED: Youhua Cai
X.XXX ±0.10	mm	1:1	B	1/2	DATE: 2021/07/10
ANGLE ±1.0°	WLCO 深圳市兴万联电子有限公司 SHENZHEN XING WAN LIAN ELECTRONICS CO., LTD.				DWG NO: C-WLPS-010A
					FILE: C

RoHS GP HF


REV.	ECR/N NO.	DESCRIPTION	DRAWN	DATE
A	/	NEW	Li Song	2021/3/26
B	/	UPDATE DRAWING	Li Song	2021/7/10



RECOMMENDED PCB LAYOUT
 DEFAULT TOLERANCE ±0.05

TABLE

NO.	PART NO.	SPECIFICATION	HSF COMPLIANT	DIM"A"
1	WLPS-010A	HOUSING_PBT BLACK UL94-V0,SPACE PA9T BLACK,CONTACT_COPPER ALLOY Au3u Ni50u,HOOK_COPPER ALLOY MATTE TIN PLATING.	ROHS COMPLIANT	2.60mm

TOLERANCE	MODEL NAME:OPS 80PIN MALE TYPE				DRAWN: Li Song	
X.X ±0.35	MODEL NO: SEE TABLE				CHECKED: Youhua Cai	
X.XX ±0.25	UNIT:	SCALE:	REVISION:	SHEET	APPROVED: Youhua Cai	
X.XXX ±0.10	mm	1:1	B	2/2	DATE: 2021/07/10	
ANGLE ±1.0°	 深圳市兴万联电子有限公司 SHENZHEN XING WAN LIAN ELECTRONICS CO.,LTD.				DWG NO: C-WLPS-010A	
					FILE: C	