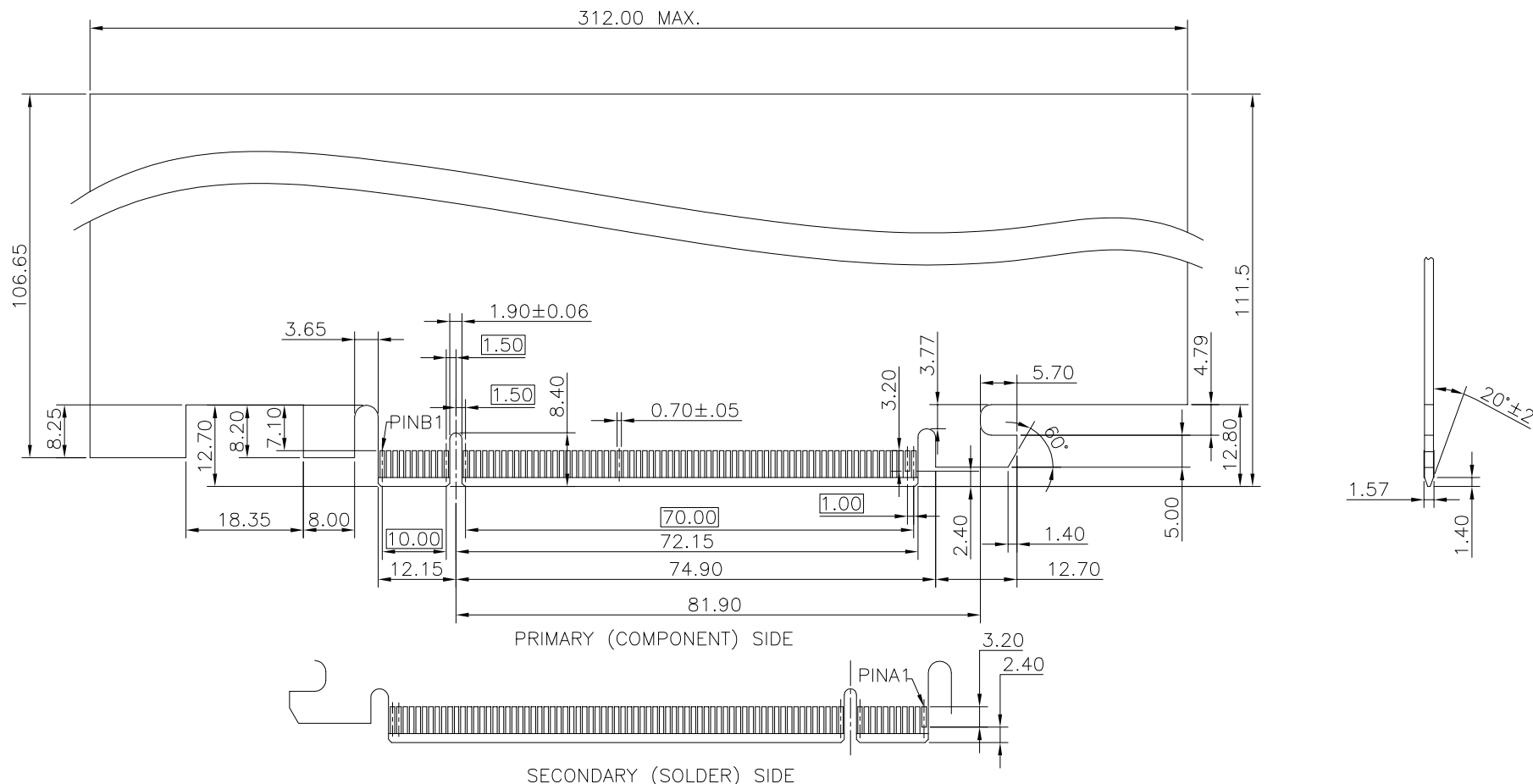


RoHS GP HF

REV.	ECR/N NO.	DESCRIPTION	DRAWN	DATE
A			LongQiang	20/04/02
B			LongQiang	20/05/08
C			XiaoPeng	21/06/10

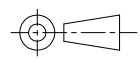


RECOMMENDED CARD EDGE FINGER
 DEFAULT TOLERANCE ±0.05

NOTES:

1. NO TIE PERMITTED FROM CARD EDGE TO LEADING EDGE OF PAD FOR PINS A1 AND 'C'.
2. CHAMFER EDGES MUST BE FREE OF CUTTING BURRS.

TOLERANCE	MODEL NAME:PCIE 164P AIRCRAFT BUCKLE WITH SHELL TYPE	DRAWN:	XiaoPeng.Zhang
X.X ±0.35	MODEL NO: SEE TABLE	CHECKED:	YouHua.Cai
X.XX ±0.25	UNIT:	APPROVED:	YouHua.Cai
X.XXX ±0.10	mm	DATE:	2021/06/10
ANGLE ±1.0°	SCALE: 1:1	DWG NO:CSU-WLPC-164P03	
	REVISION: C	FILE:	C
	SHEET 2/3		



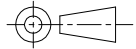
WILCO 深圳市兴万联电子有限公司
 SHENZHEN XING WAN LIAN ELECTRONICS CO., LTD.

RoHS GP HF

REV.	ECR/N NO.	DESCRIPTION	DRAWN	DATE
A	_____	_____	LongQiang	20/04/02
B	_____	_____	LongQiang	20/05/08
C	_____	_____	XiaoPeng	21/06/10

TABLE

NO.	PART NO.	SPECIFICATION	HSF COMPLIANT	DIM"A"
1	WLPC-069A	HOUSING_PA66 RED1795U UL94-HB,LATCH_PA66 RED,CONTACT_C2680 G/F Ni50u,HOOK_STEEL ALLOY NICKEL PLATING,SHELL.	RoHS COMPLIANT	2.50mm

TOLERANCE X.X ±0.35 X.XX ±0.25 X.XXX ±0.10 ANGLE ±1.0°	MODEL NAME:PCIE 164P AIRCRAFT BUCKLE WITH SHELL TYPE				DRAWN: XiaoPeng.Zhang	
	MODEL NO: SEE TABLE				CHECKED: YouHua.Cai	
	UNIT:	SCALE:	REVISION:	SHEET	APPROVED: YouHua.Cai	
	mm	1:1	C	3/3	DATE: 2021/06/10	
		WLCO 深圳市兴万联电子有限公司 SHENZHEN XING WAN LIAN ELECTRONICS CO.,LTD.			DWG NO: CUS-WLPC-164P03 FILE: C	