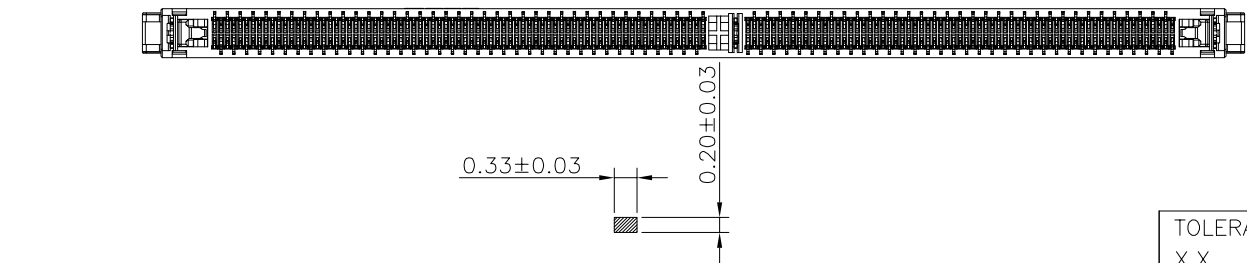
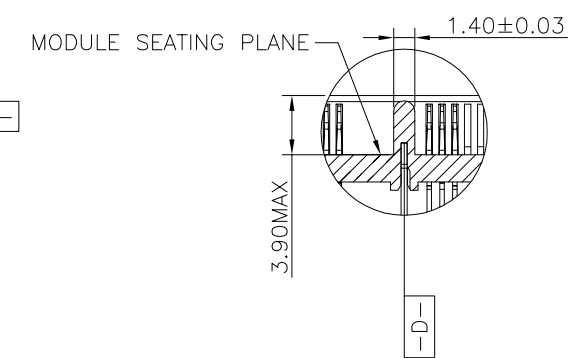
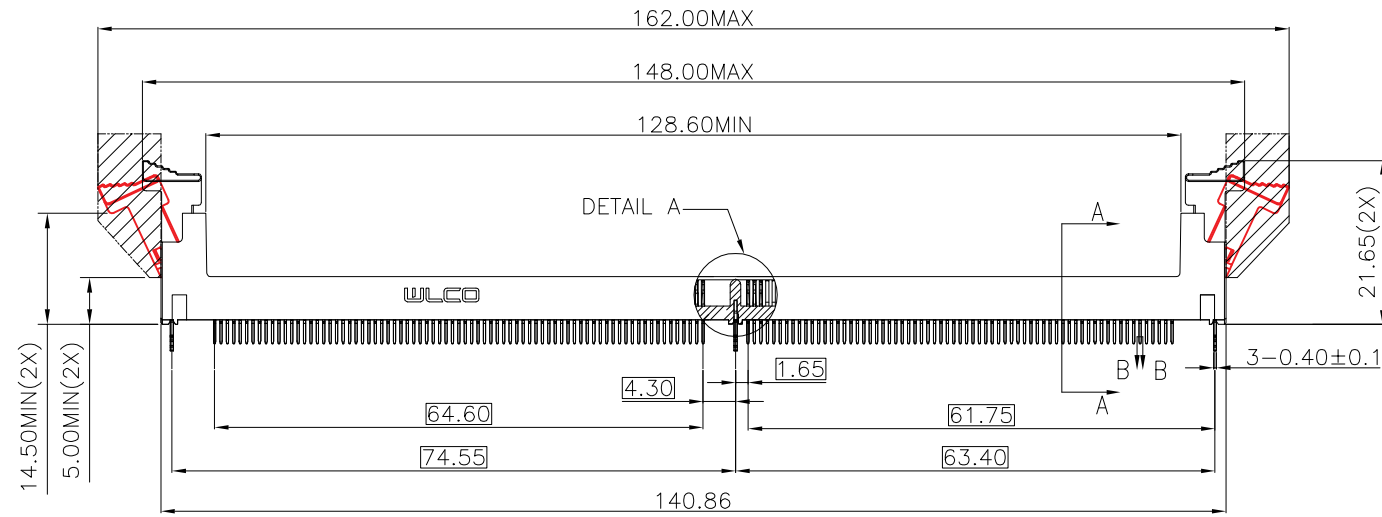
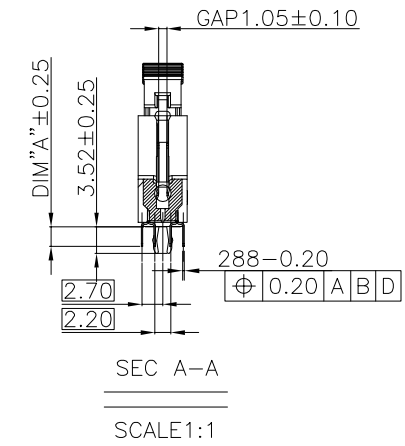
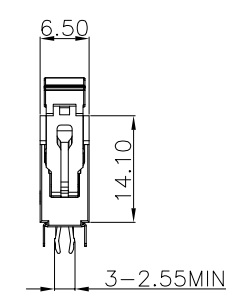
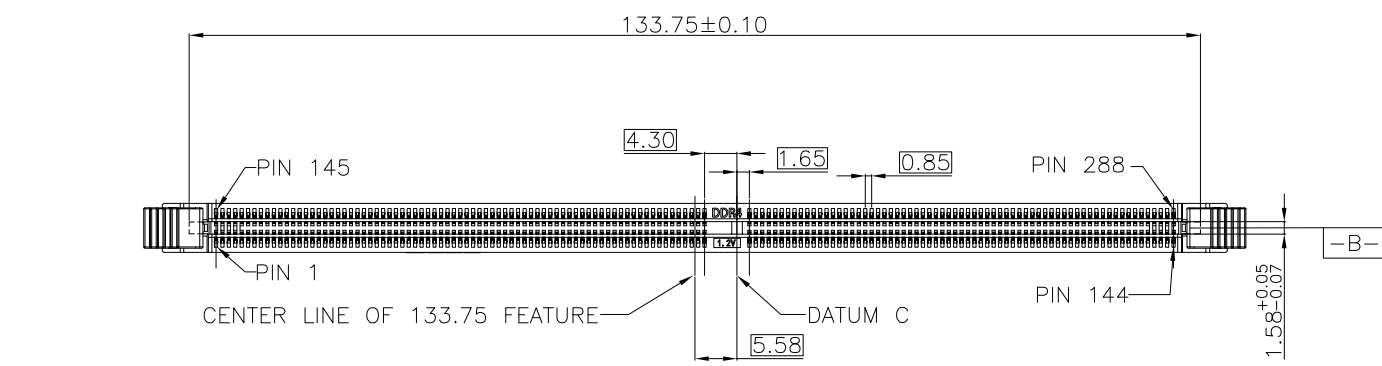


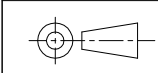
RoHS GP HF

| REV. | ECR/N NO. | DESCRIPTION | DRAWN     | DATE     |
|------|-----------|-------------|-----------|----------|
| F    | _____     | _____       | LongQiang | 20/04/18 |
| G    | _____     | _____       | LongQiang | 20/05/08 |
| H    | _____     | _____       | LongQiang | 21/04/28 |



SOLDER TAIL SECTION  
SEC B-B 10:1

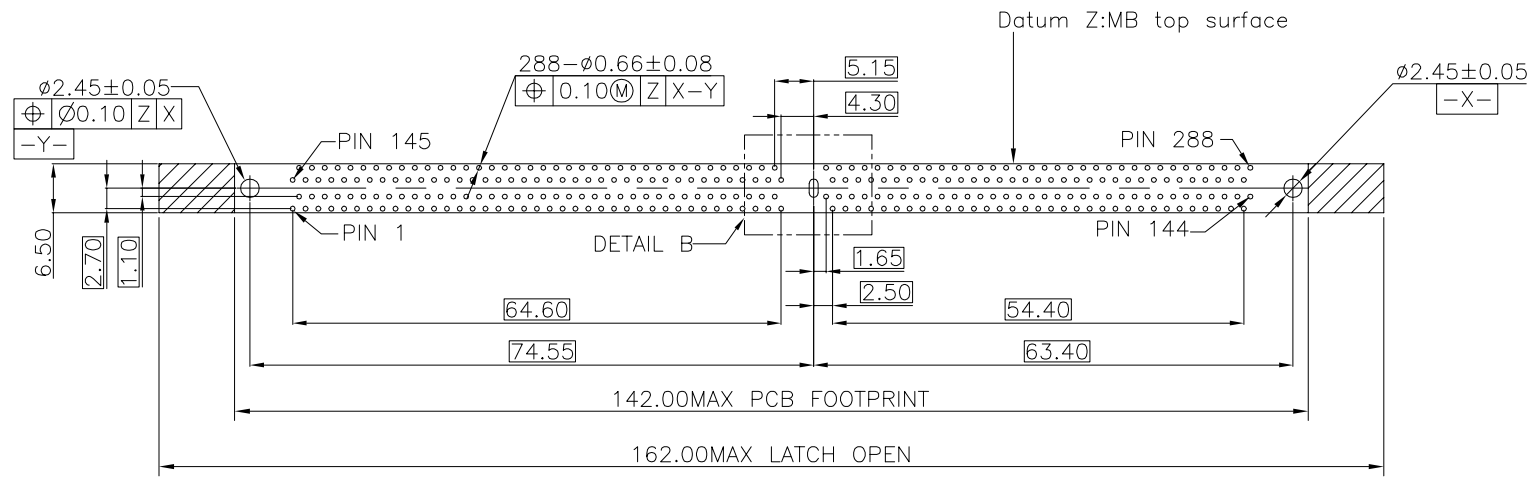
|                       |   |        |           |       |           |                |
|-----------------------|---|--------|-----------|-------|-----------|----------------|
| TOLERANCE             | MODEL NAME: DDR4 288PIN DOUBLE LATCH TYPE |        |           |       | DRAWN:    | LongQiang.Peng |
| X.X $\pm 0.35$        | MODEL NO: SEE TABLE                       |        |           |       | CHECKED:  | YouHua.Cai     |
| X.XX $\pm 0.25$       | UNIT:                                     | SCALE: | REVISION: | SHEET | APPROVED: | YouHua.Cai     |
| X.XXX $\pm 0.10$      | mm  | 1:1    | H         | 1/5   | DATE:     | 2021/04/28     |
| ANGLE $\pm 1.0^\circ$ | DWG NO: CUS-WLDD-288P01                   |        |           |       | FILE:     | C              |



**WLCOP** 深圳市兴万联电子有限公司  
SHENZHEN XING WAN LIAN ELECTRONICS CO., LTD.

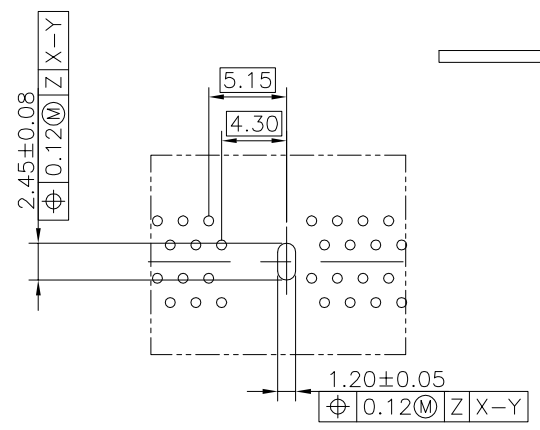
RoHS GP HF

| REV. | ECR/N NO. | DESCRIPTION | DRAWN     | DATE     |
|------|-----------|-------------|-----------|----------|
| F    | _____     | _____       | LongQiang | 20/04/18 |
| G    | _____     | _____       | LongQiang | 20/05/08 |
| H    | _____     | _____       | LongQiang | 21/04/28 |



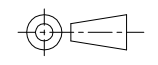
RECOMMENDED PCB LAYOUT  
 DEFAULT TOLERANCE  $\pm 0.05$

RECOMMENDED PCB THICKNESS  
 DEFAULT TOLERANCE  $\pm 0.05$



DETAIL B  
 SCALE: 2:1

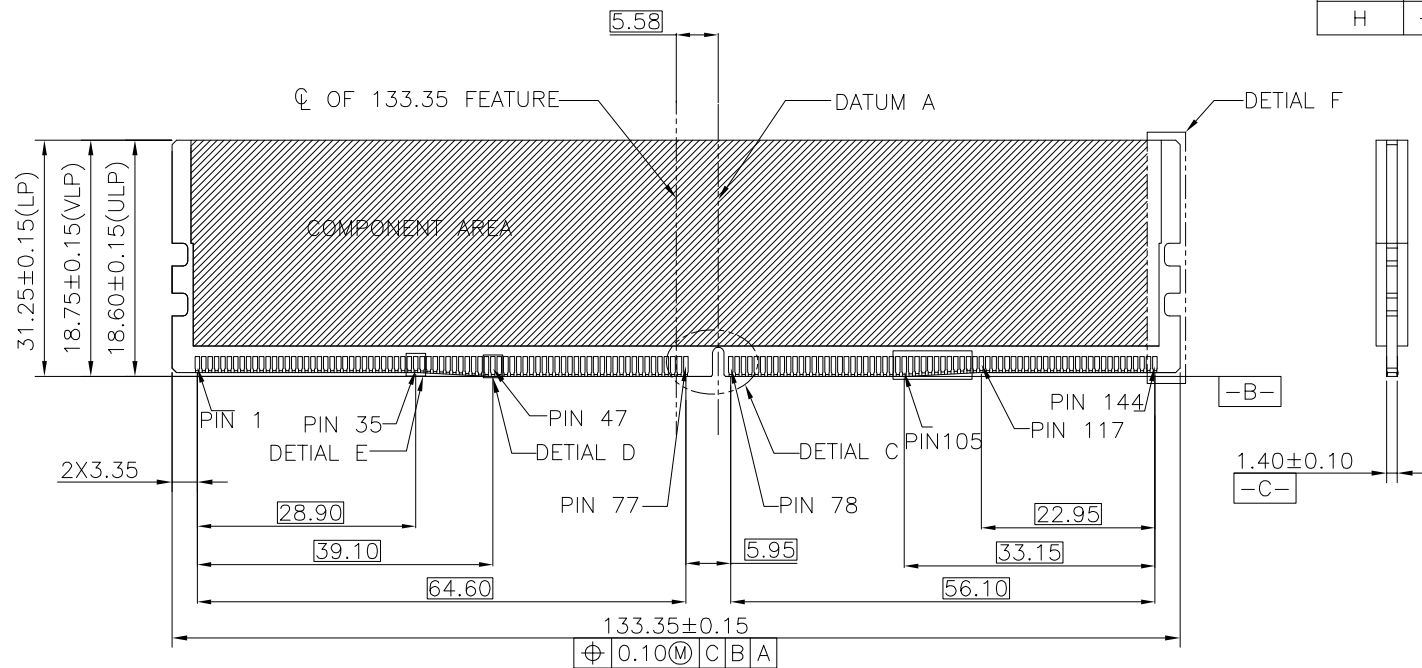
|                       |   |                         |
|-----------------------|---|-------------------------|
| TOLERANCE             | MODEL NAME: DDR4 288PIN DOUBLE LATCH TYPE | DRAWN: LongQiang.Peng   |
| X.X $\pm 0.35$        | MODEL NO: SEE TABLE                       | CHECKED: YouHua.Cai     |
| X.XX $\pm 0.25$       | UNIT: mm                                  | APPROVED: YouHua.Cai    |
| X.XXX $\pm 0.10$      | SCALE: 1:1                                | DATE: 2021/04/28        |
| ANGLE $\pm 1.0^\circ$ | REVISION: H                               | DWG NO: CUS-WLDD-288P01 |
|                       | SHEET: 2/5                                | FILE: C                 |



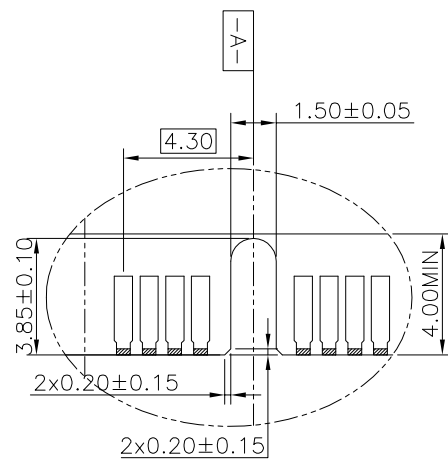
**WLCO** 深圳市兴万联电子有限公司  
 SHENZHEN XING WAN LIAN ELECTRONICS CO., LTD.

RoHS GP HF

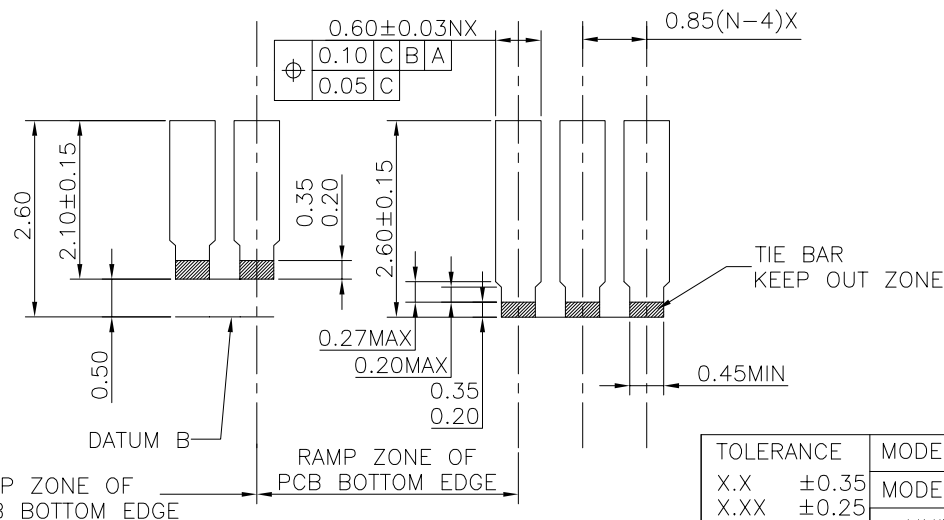
| REV. | ECR/N NO. | DESCRIPTION | DRAWN     | DATE     |
|------|-----------|-------------|-----------|----------|
| F    |           |             | LongQiang | 20/04/18 |
| G    |           |             | LongQiang | 20/05/08 |
| H    |           |             | LongQiang | 21/04/28 |



RECOMMENDED CARD EDGE FINGER  
DEFAULT TOLERANCE ±0.05



DETAIL C  
SCALE 4:1

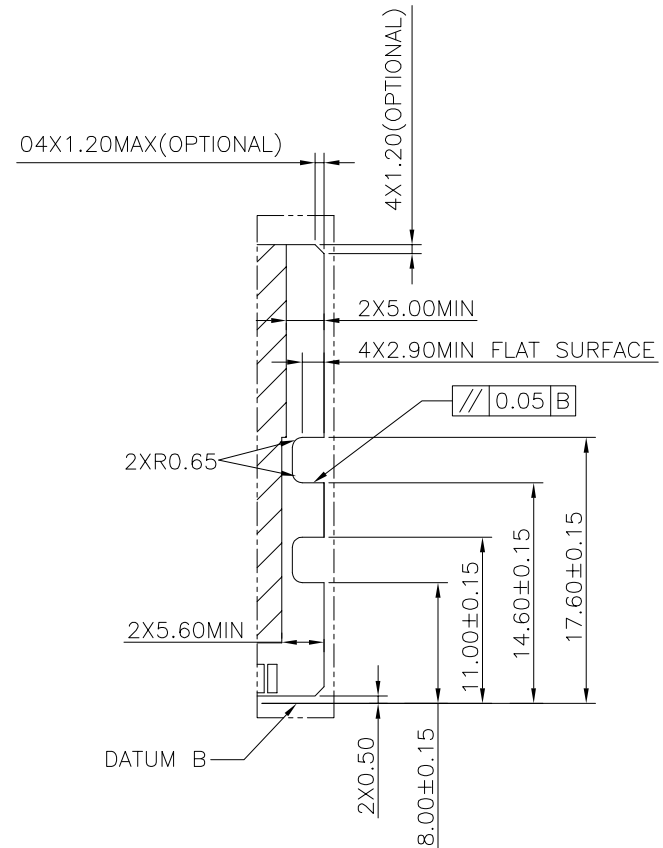


STEP ZONE OF PCB BOTTOM EDGE

RAMP ZONE OF PCB BOTTOM EDGE

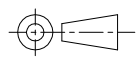
DETAIL E  
SCALE 10:1

DETAIL D  
SCALE 10:1



DETAIL F  
SCALE 2:1

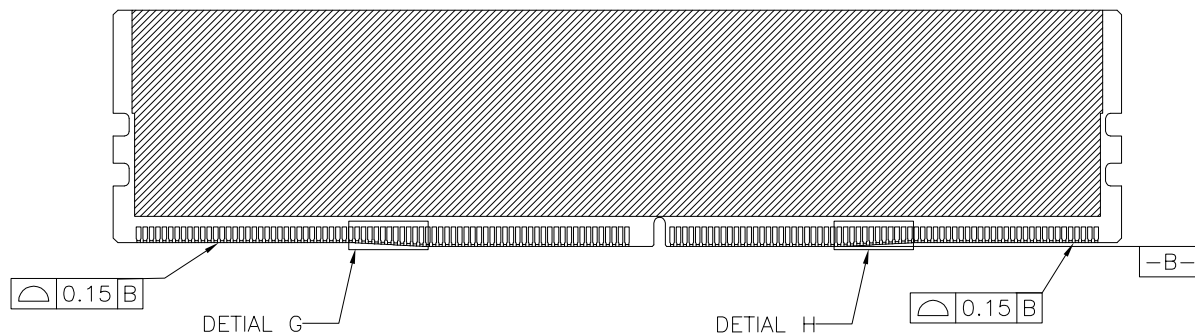
| TOLERANCE   | MODEL NAME: DDR4 288PIN DOUBLE LATCH TYPE | DRAWN: LongQiang.Peng   |
|-------------|---|-------------------------|
| X.X ±0.35   | MODEL NO: SEE TABLE                       | CHECKED: YouHua.Cai     |
| X.XX ±0.25  | UNIT: mm                                  | APPROVED: YouHua.Cai    |
| X.XXX ±0.10 | SCALE: 1:1                                | DATE: 2021/04/28        |
| ANGLE ±1.0° | REVISION: H                               | DWG NO: CUS-WLDD-288P01 |
|             | SHEET: 3/5                                | FILE: C                 |



**WLC0** 深圳市兴万联电子有限公司  
SHENZHEN XING WAN LIAN ELECTRONICS CO., LTD.

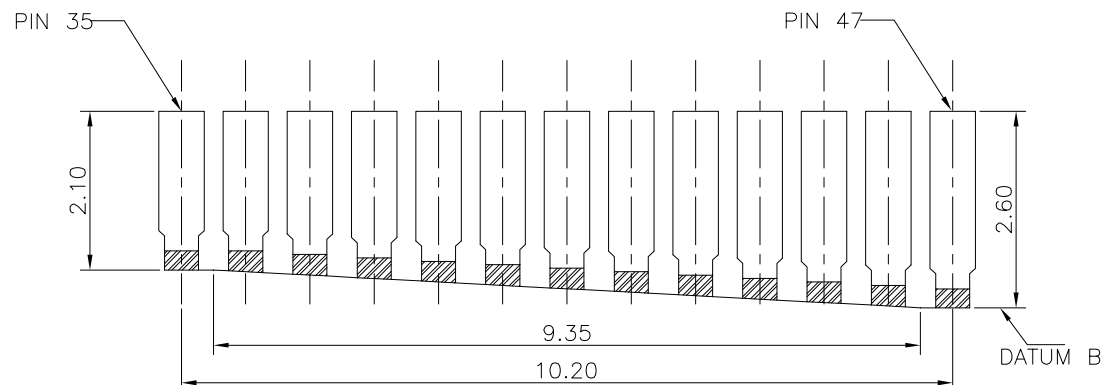
RoHS GP HF

| REV. | ECR/N NO. | DESCRIPTION | DRAWN     | DATE     |
|------|-----------|-------------|-----------|----------|
| F    | _____     | _____       | LongQiang | 20/04/18 |
| G    | _____     | _____       | LongQiang | 20/05/08 |
| H    | _____     | _____       | LongQiang | 21/04/28 |



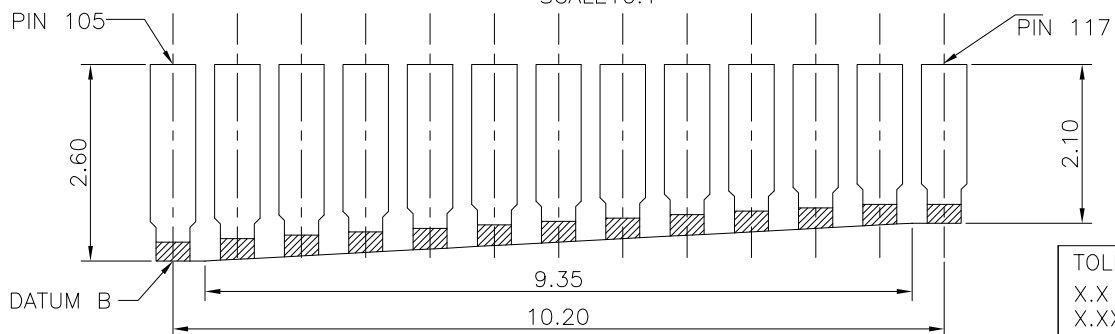
NOTES:

- MATERIAL SPECIFICATION
  - HOUSING:HIGH TEMPERATURE THERMOPLASTIC,UL94-V0 V2 OR HB;
  - LATCH:HIGH TEMPERATURE THERMOPLASTIC,UL94-V0 V2 OR HB;
  - CONTACT:COPPER ALLOY;
  - HOOK:STEEL ALLOY OR STAINLESS STEEL OR COPPER ALLOY;
- PLATING SPECIFICATION
  - CONTACT:
    - 50U" MIN NICKEL UNDERPLATED;
    - GOLD/NICKEL PLATING ON THE CONTACT AREA;
    - 100U" MIN MATTE TIN PLATING ON THE SOLDER AREA;
  - HOOK:
    - ONLY NICKEL PLATING;
    - OR NO PLATING;
    - OR 50U" MIN NICKEL UNDERPLATED,100U" MIN MATTE TIN ;
- MECHANICAL PERFORMANCE
  - INSERTION FORCE-MODULE TO CONNECTOR:106.8N MAX;
  - INSERTION FORCE-CONNECTOR TO BOARD:75N MAX;
  - RETENTION FORCE:300gf/PIN MIN;
  - DURABILITY:25 CYCLES;
  - UNMATING FORCE(PER PIN PAIR):14gf MIN;
- ELECTRICAL PERFORMANCE
  - CURRENT RATING:0.75A PER PIN MAX;
  - VOLTAGE RATING:1.2V±0.1V;
  - LLCR:10mΩ MAX (INITIAL);
  - INSULATION RESISTANCE:500V DC,1MΩ MIN;
  - DIELECTRIC WITHSTAND VOLTAGE:500V AC,NO BREAK DOWN;
- HSF COMPLIANT;
- WAVE SOLDERING PROCESS
  - WAVE SOLDERING TEMPERATURE SHALL BE:260°C IMMERSION DURATION 5SECONDS.
  - THE LATCH SHALL BE CLOSED WHEN USED TO SOLDER;



DETAIL G

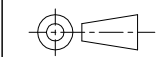
SCALE10:1



DETAIL H

SCALE10:1

| TOLERANCE   | MODEL NAME: DDR4 288PIN DOUBLE LATCH TYPE | DRAWN:    | LongQiang.Peng  |
|-------------|---|-----------|-----------------|
| X.X ±0.35   | MODEL NO: SEE TABLE                       | CHECKED:  | YouHua.Cai      |
| X.XX ±0.25  | UNIT: mm                                  | APPROVED: | YouHua.Cai      |
| X.XXX ±0.10 | SCALE: 1:1                                | DATE:     | 2021/04/28      |
| ANGLE ±1.0° | REVISION: H                               | DWG NO:   | CUS-WLDD-288P01 |
|             | SHEET: 4/5                                | FILE:     | C               |



**WLCO** 深圳市兴万联电子有限公司  
SHENZHEN XING WAN LIAN ELECTRONICS CO.,LTD.

1 2 3 4 5 6 7 8

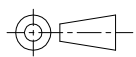
RoHS GP HF

| REV. | ECR/N NO. | DESCRIPTION | DRAWN     | DATE     |
|------|-----------|-------------|-----------|----------|
| F    | _____     | _____       | LongQiang | 20/04/18 |
| G    | _____     | _____       | LongQiang | 20/05/08 |
| H    | _____     | _____       | LongQiang | 21/04/28 |

A

TABLE

| NO. | PART NO.  | SPECIFICATION   | HSF COMPLIANT  | DIM"A" | DIM"B"    |
|-----|-----------|---|----------------|--------|-----------|
| 1   | WLDD-058A | HOUSING_PA66 GRAY431U UL94-HB,LATCH_PA66 GRAY,CONTACT_C2680 G/F Ni50u, HOOK_STEEL ALLOY NICKEL PLATING. | RoHS COMPLIANT | 2.70mm | 1.8-2.2mm |
|     |           |   |                |        |           |

|   |   |        |           |                        |                       |  |
|---|---|--------|-----------|------------------------|-----------------------|--|
| TOLERANCE<br>X.X ±0.35<br>X.XX ±0.25<br>X.XXX ±0.10<br>ANGLE ±1.0°  | MODEL NAME: DDR4 288PIN DOUBLE LATCH TYPE |        |           |                        | DRAWN: LongQiang.Peng |  |
|   | MODEL NO: SEE TABLE                       |        |           |                        | CHECKED: YouHua.Cai   |  |
|   | UNIT:                                     | SCALE: | REVISION: | SHEET                  | APPROVED: YouHua.Cai  |  |
|   | mm  | 1:1    | H         | 5/5                    | DATE: 2021/04/28      |  |
|  <b>WLCO</b> 深圳市兴万联电子有限公司<br>SHENZHEN XING WAN LIAN ELECTRONICS CO.,LTD. |   |        |           | DWG NO:CUS-WLDD-288P01 |                       |  |
|   |   |        |           | FILE: C                |                       |  |